

## LOKAL 4

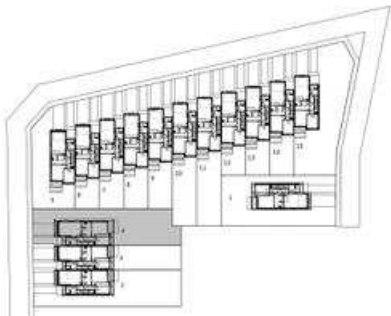
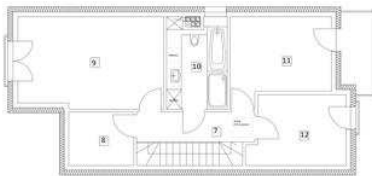
### PARTER - 66,82 m<sup>2</sup>

- |                    |                        |
|--------------------|------------------------|
| 1. Przedsionek     | - 3,26 m <sup>2</sup>  |
| 2. Garaż           | - 22,64 m <sup>2</sup> |
| 3. Korytarz        | - 3,86 m <sup>2</sup>  |
| 4. Łazienka        | - 1,95 m <sup>2</sup>  |
| 5. Schody          | - 4,21 m <sup>2</sup>  |
| 6. Salon z aneksem | - 30,90 m <sup>2</sup> |



### PIĘTRO - 65,34 m<sup>2</sup>

- |              |                        |
|--------------|------------------------|
| 7. Korytarz  | - 5,6 m <sup>2</sup>   |
| 8. Garderoba | - 5,61 m <sup>2</sup>  |
| 9. Pokój     | - 21,64 m <sup>2</sup> |
| 10. Łazienka | - 8,73 m <sup>2</sup>  |
| 11. Pokój    | - 13,11 m <sup>2</sup> |
| 12. Pokój    | - 10,65 m <sup>2</sup> |



ETAP 2

LOKAL nr 4

POWIERZCHNIA 132,16 m<sup>2</sup>

DZIAŁKA 300,10 m<sup>2</sup>

NOVODEVELOPMENT SP. Z O.O.  
UL. UL. DWORCOWA 2 POK 203  
70-206 SZCZECIN

WWW.NOVODEVELOPMENT.PL  
NOVO@NOVODEVELOPMENT.PL

+48 781 300 998